

**3DHISTECH**

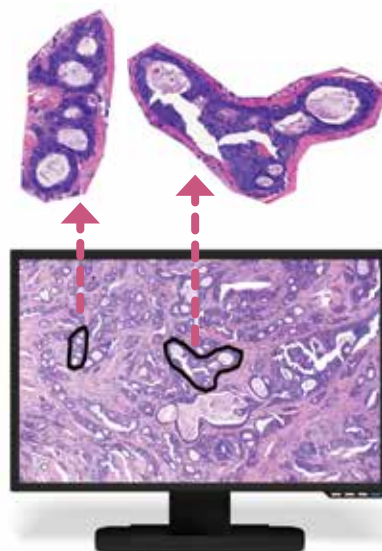
*Solution resides in the details*

## DIGITAL LMD

**Laser microdissection (LMD) is a contamination-free method to isolate cells of interest for molecular analysis.**

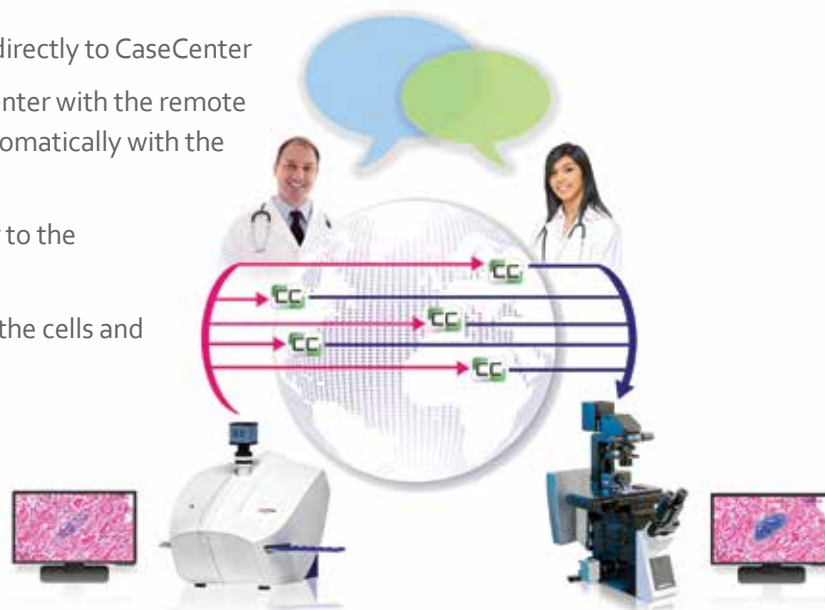
With 3DHISTECH and MMI, it is now possible to combine the advantages of digital pathology and molecular pathology.

**MMI**



## Workflow

- Scan your slides with Panoramic MIDI, directly to CaseCenter
- Share your digital slides stored in CaseCenter with the remote specialist or find the areas of interest automatically with the image analysis software
- Import the cutting map from CaseCenter to the CellCut Plus software
- Start the automatic cutting that isolates the cells and transfers them to the PCR tube for downstream analysis



## Advantages

- Marking on digital slides: anytime, anywhere you are
- Connect with a specialist remotely: secure and fast
- Sharing the work between the specialist and the assistant reduces costs significantly
- Automatic marking with the image analysis tools makes it possible to select thousands of cells quickly
- Sensitive samples can be stored in a safe place during consultation and area selection

## Components

### Pannoramic MIDI

- 12-slide brightfield and fluorescent digital slide scanner
- Award-winning image quality

### CaseCenter

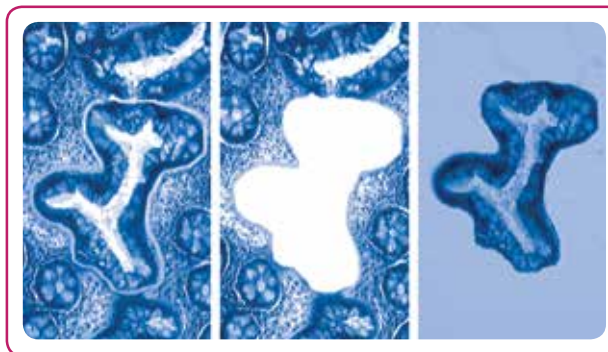
- Web based slide and case database
- HIS/LIS integration possibility

### Image analysis software

- Multi-purpose solution
- Runs on local and remote slides

### MMI LMD device

- MMI CellCut Plus
- Incorporated high intensity light source
- Fluorescence option



Production and  
development by



www.molecular-machines.com

3DHISTECH LTD.

Konkoly-Thege Miklos st. 29-33., Bldg. 6.

H-1121 Budapest, Hungary

Phone: +36-1-392-2274 Fax: +36-1-392-2723

Info: info@3dhistech.com www.3dhistech.com



3DHISTECH